

Battery Drill Winch DW1000 Painted

Produktinformation



The worm gear winch can be operated both manually and with a cordless drill. A user-friendly winch and often used as a back-up system. If there is a power failure and you want to move a heavy load quickly and effectively, the use of a battery-powered drill offers a solution. The winch is equipped with automatic grease lubrication and a special flexible adaptor to absorb the vibrations of the drilling machine and keep the winch in good condition.

- load pressure brake with double ratchet system for safe stable hold of the load in any position
- cable outlet upwards, downwards or at rear
- protection classification IP54
- automatic grease system for the worm gearing
- adjustable crank
- drill and hand operated
- suitable for wall and (optional) floor mounting
- 1 layer of paint

Options:

- zinc-plated finish 6 - 8 micron (EV)
- 2 layers of paint (2L)
- grooved drum (GD)
- 2 drum compartment (2D) or multiple up to 8 (XD)
- suitable for floor mounting (FM)

... [Read more](#)

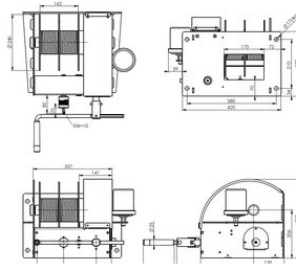
Märkning: Enligt standard, CE-märkning

Standard: EN 13157

Säkerhetsfaktor: 4:1

Battery Drill Winch DW1000 Painted

Ritning & mått



Mer information / Reservdelar

Art.nr	Benämning	Max last (WLL) ton	Lina Ø mm	Rope capacity m	Kapacitet 1:a lagret kg	Capacity top layer kg	Lyfthastighet m/min	Vikt kg
DW1000	DW1000	1	8	73	1 000	527	0,5	39