

Lifting eye nut, grade 80

Produktinformation

Lifting for all lifting directions.

WLL for horizontal lifting is marked on the eye.

... [Read more](#)



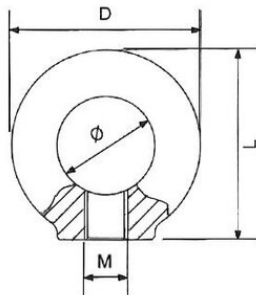
Märkning: Enligt standard, CE-märkning

Standard: EN 1677-1

Säkerhetsfaktor: 4:1

Lifting eye nut, grade 80

Ritning & mått



Lyfttabell

Art.nr	Max last (WLL) ton	Gänga mm	Eye diameter mm	Thread pitch mm	Dmm mm	L mm	Mmm mm	ø mm mm	Vikt kg
NS8M06	0,4	M6	20	1	36	36	M6	20	0,05
NS8M08	0,8	M8	20	1,25	36	36	M8	20	0,05
NS8M10	1	M10	25	1,5	45	45	M10	25	0,09
NS8M12	2	M12	30	1,75	54	53	M12	30	0,16
NS8M14	3	M14	35	2	63	62	M14	35	0,24
NS8M16	4	M16	35	2	63	62	M16	35	0,24
NS8M20	6	M20	40	2,5	72	71	M20	40	0,36
NS8M24	8	M24	50	3	90	90	M24	50	0,72
NS8M30	12	M30	60	3,5	108	109	M30	60	1,32
NS8M36	16	M36	70	4	126	128	M36	70	2,08
NS8M42	24	M42	80	4,5	144	147	M42	80	3,11
NS8M48	32	M48	90	5	166	168	M48	90	5,02