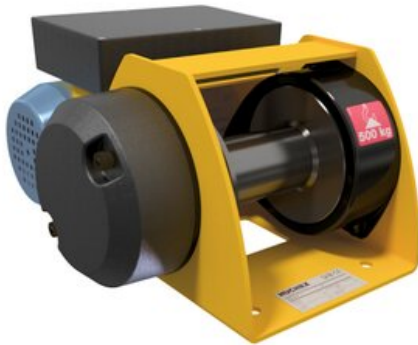


## Electric winch MOTORBOX



### Product information

Electric winch designed for simple lifting and pulling operations in different applications, ideal for replacing a manual winch. Capacities from 150 to 500 kg.

Available in two versions: - Direct control (CD) only for use protected from the weather. - Low voltage control (BT) ensuring user protection against electrical risks.

#### Applications:

- Maintenance
- Industry
- Manoeuvring hatches, doors etc.

#### Technical properties:

- FEM class: 1Dm - ISO M1 – Occasional use.
- Mechanically welded steel drum with wide flanges for safe and sound fastening of the rope.
- Greased reducer with helical gears.
- Automatic lack of current brake.
- Single phase 230 V motor brake with permanent capacitor - 50 Hz lifting type. Class F. Protection IP 54.
- Limit switches included.
- Direct control (CD models) only for use protected from the weather. Low voltage control (BT models) ensuring user protection against electrical risks.
- 3 buttons pendant control (Up - Down- Emergency Stop), not removable (3m long control cable).

#### Options:

- Wire rope and hook Tarpaulin cover

**Marking:** According to standard, CE-marked

**Temperature range:** -10°C to +50°C

**Finish:** Painted.

**Standard:** EN 13157, EN 14492-1

**Safety factor:** 5:1

Part code	WLL ton	Type	Rope Ø mm	Speed top layer m/min	Motor kW	Speed 1st layer m/min	Number of layers	Max. drum capacity m	A, B, C, D, E, F, G, øH I øJ øK L M	Weight kg	Delivery time days
MOTORBOX150	0.15	CD	4	10.6	0.37	8.3	3	15	310 179 299 154 114 15 77 10.5 123 54 122 76 79	18.5	14
MOTORBOX150BT	0.15	BT	4	10.6	0.37	8.3	3	15	358 207 329 154 114 15 77 10.5 123 54 122 76 79	20	14
MOTORBOX300	0.3	CD	5	5.9	0.37	4.6	3	16	390 205 341 200 144 35 88 13 124 63.5 138 118.5 100	27	14
MOTORBOX300BT	0.3	BT	5	5.9	0.37	4.6	3	16	438 212 341 200 144 35 88 13 124 63.5 138 118.5 100	29	14
MOTORBOX500	0.5	CD	6	3.6	0.37	2.6	3	13.5	390 205 341 200 144 35 88 13 124 63.5 138 118.5 100	27	14
MOTORBOX500BT	0.5	BT	6	3.6	0.37	2.6	3	13.5	438 212 341 200 144 35 88 13 124 63.5 138 118.5 100	29	14

## Blueprint

