



Multi driven hoist

Product information



Small aluminium multi driven chain hoists with a wide range of lifting applications. Can be used with a drill machine. The drill can be connected with 1.5-3 mtr long operating cable in the hoist, so the load can be easily lifted and lowered with the help of the drill machine.

Can also be used directly from the shaft (8 mm hexagonal) coming out of the side of the hoist frame, either with a drill or manually with a comb or 1/2" ratchet handle. The lifting and lowering speed is directly dependent on the rotation speed of the drill, so the speed is always controlled by the drill's own controls.

The standard lifting height is 3 mtr. Other lifting heights can be supplied quickly. The upper and lower hooks are equipped with a swivel.

Material: Aluminium | CR6+ free

Marking: CE-marked

Temperature range: -10 - (+) 50°C

Finish: Painted, white/orange

Note: Also available 3 m length operating cable

Part code	WLL ton	Lifting height m	Number of falls	Lifting speed m/min.	Load chain mm	A mm	B mm	C mm	D mm	E mm	F mm	G mm	H min mm	Weight kg	Delivery time days
KTP250	0.25	3	1	2,2	3,2 x 9	109	84	25	1,500	16	30	8	240	3.5	1
KTP500	0.5	3	1	2,2	4,3 x 12	122	102	30	1,500	16	30	8	270	5.45	1
KTP1000	1	3	2	1,1	4,3 x 12	122	102	32,3	1,500	16	30	8	350	9.15	1

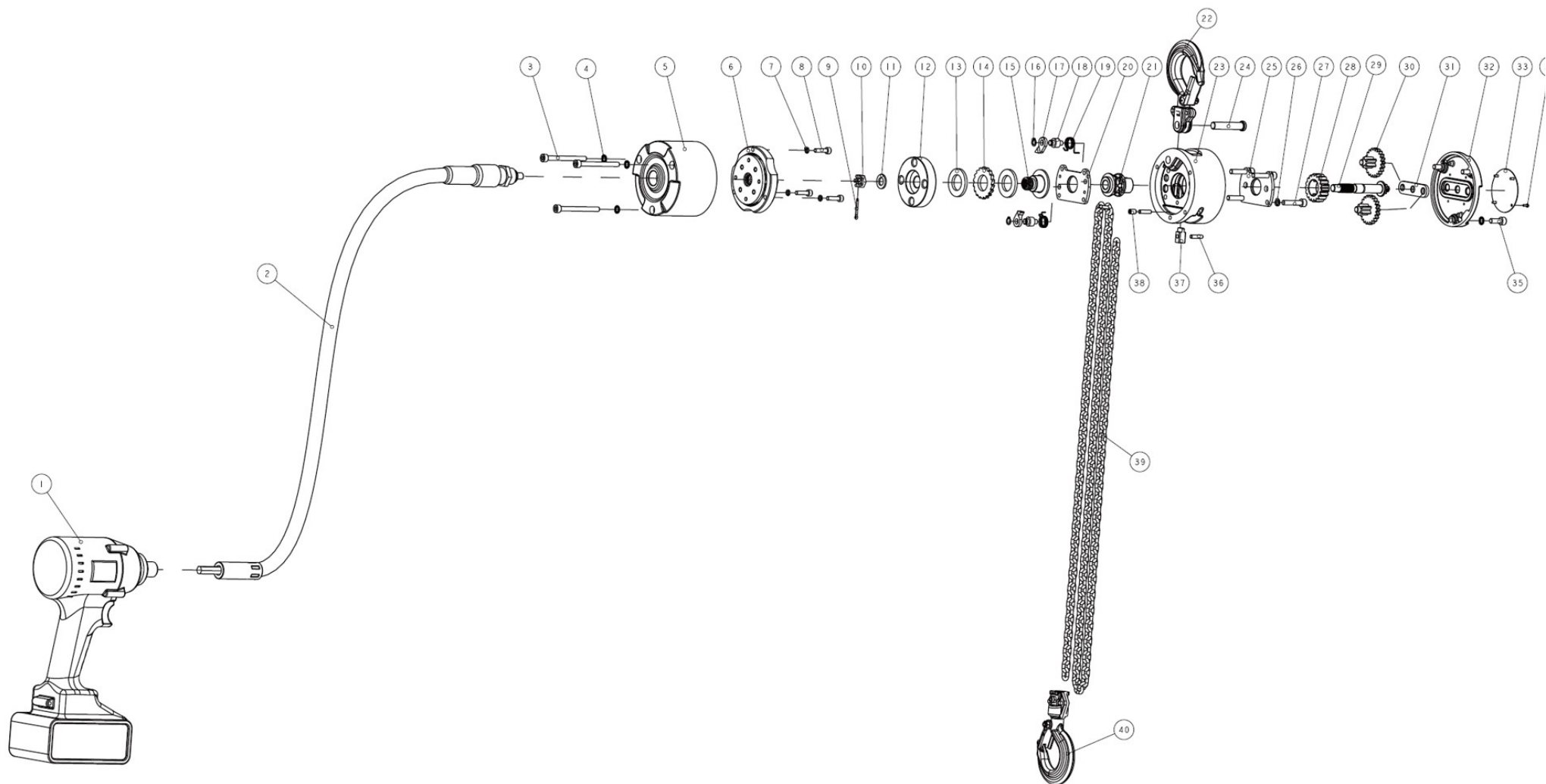
Technical data / Spare Parts

SPARE PARTS

Spare part (product code)	Description	Suitable for hoist (product code)
KTP250YKO	Top hook ass'y Part no. 22	KTP250
KTP250AKO	Bottom hook ass'y Part no. 40	KTP250
KTP250SAL	Hook latch kit Incl. parts for one hook	KTP250
KTP250JAR	Friction disc set (2 pcs) Part no. 13	KTP250
KTP250RAT	Ratchet wheel Part no. 14	KTP250
KTP500YKO	Top hook ass'y Part no. 22	KTP500
KTP500AKO	Bottom hook ass'y Part no. 40	KTP500
KTP500SAL	Hook latch kit Incl. parts for one hook	KTP500
KTP500JAR	Friction disc set (2 pcs) Part no. 13	KTP500
KTP500RAT	Ratchet wheel Part no. 14	KTP500
KTP1000YKO	Top hook ass'y Part no. 22	KTP1000
KTP1000AKO	Bottom hook ass'y Part no. 40	KTP1000
KTP1000SAL	Hook latch kit Incl. parts for one hook	KTP1000
KTP1000JAR	Friction disc set (2 pcs) Part no. 13	KTP1000
KTP1000RAT	Ratchet wheel Part no. 14	KTP1000
KTPKAAPELI1,5	1,5 m operating cable, "standard" Part no. 2	KTP250, KTP500, KTP1000

KTPKAAPELI3	3,0 m operating cable, "long" Part no. 2	KTP250, KTP500, KTP1000
TALKE329G100	Hoist chain 3,2 × 9 mm Grade 100, EN 818-7 Part no. 39	KTP250
TALKE4312G100	Hoist chain 4,3 × 12 mm Grade 100, EN 818-7 Part no. 39	KTP500, KTP1000

Also other spare parts available with a delivery time, ask our sales for more information.



Blueprint

