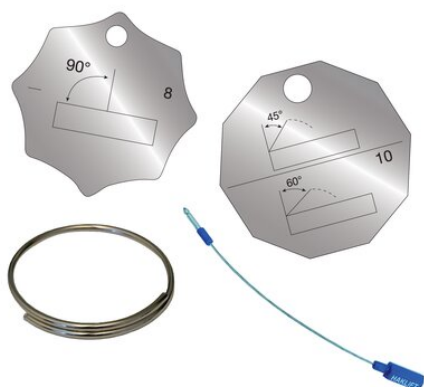


## Load labels

### Product information



Aluminium blank load plates for chain hoist assemblies. Available for both Grade 80 and Grade 100. Load plates can be attached to the chain hoist assembly with a ring or wire rope. The wire is permanently locked once the ends are connected and cannot be opened afterwards.

#### Grade 80 plates

- 1-leg | Grade 80 | Product code: KK1BLA
- 2-4-legs | Grade 80 | Product code: KKMBLA

#### Grade 100 plates

- 1-leg | Grade 100 | Product code: KK110BLA
- 2-4-legs | Grade 100 | Product code: KKM10BLA

#### Mounting accessories

- Ring | Product code: KKRENG
- Wire rope | Product code: KKVAIJ

[... Read more](#)

**Note:** Haklift fills in the information on the load plates for the products it has manufactured

## Load labels

---

### Technical data / Spare Parts

Part code	Code
KK110BLA	KK110BLA
KK1BLA	KK1BLA
KKM10BLA	KKM10BLA
KKMBLA	KKMBLA
KKRENG	KKRENG
KKVAIJ	KKVAIJ