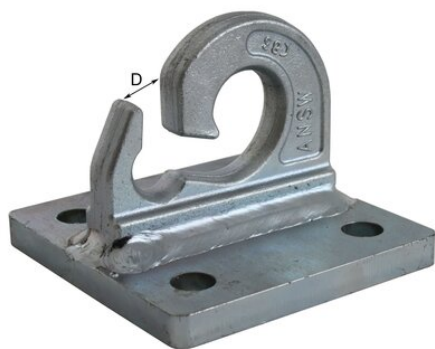


Boltable load lashing point

Product information

Robust boltable load lashing point.

... [Read more](#)



Material: Steel
Finish: Non-coated

Boltable load lashing point

Technical data / Spare Parts

Part code	LC daN	MBL ton	Length mm	Width mm	Height mm	D, mm	Weight kg
KIP6000R	3,000	6	100	100	76	11	1