

## Beam clamps with RFID

---

### Product information

The clamp can be used for example to attach a hoist to an I or T beam ... [Read more](#)

---



**Material:** Steel

**Marking:** According to standard, CE-marked

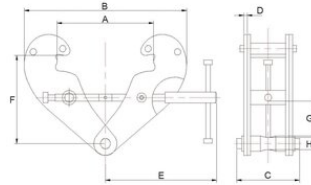
**Finish:** Painted, orange

**Standard:** EN 13155

**Safety factor:** 4:1

## Beam clamps with RFID

### Blueprint



### Technical data / Spare Parts

Part code	WLL ton	Beam width	A max mm	B max mm	C mm	D mm	E mm	F min mm	F max mm	G minmm mm	H, mm	B minmm mm	Weight kg
TARPALH10	1	80-240	270	183	94	4	198	100	154	22	20	370	3.5
TARPALH20	2	80-240	270	183	102	6	198	100	154	22	20	370	4.5
TARPALH30	3	90-330	355	243	132	8	263	148	219	46	22	500	9.5
TARPALH50	5	90-330	355	243	142	10	263	148	219	43	28	500	11
TARPALH100	10	90-350	364	269	180	12	285	165	239	51	38	521	16