

Lifting eye nuts DIN 582

Product information

Lifting eye nuts for vertical lifting

... [Read more](#)



Features: Only for vertical lifting

Material: Steel

Marking: According to standard, CE-marked

Temperature range: -20°C - (+)200°C

Finish: Electro galvanized

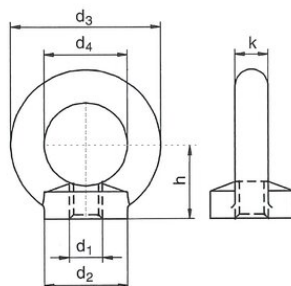
Standard: DIN 582

Note: Larger sizes and inch sizes also available

Safety factor: 4:1

Lifting eye nuts DIN 582

Blueprint



Technical data / Spare Parts

Part code	WLL ton	Thread mm	Packing	Thread pitch mm	d1 mm mm	d2 mm mm	d3 mm mm	d4 mm mm	h mm mm	k mm mm	Weight kg
NSM06	0.06	M6	50	1	M6	20	36	20	18	8	0.045
NSM08	0.14	M8	50	1,25	M8	20	36	20	18	8	0.05
NSM10	0.23	M10	50	1,5	M10	25	45	25	22.5	10	0.09
NSM12	0.34	M12	25	1,75	M12	30	54	30	26	12	0.16
NSM14	0.34	M14	25	2	M14	35	63	35	30.5	14	0.24
NSM16	0.7	M16	10	2	M16	35	63	35	30.5	14	0.24
NSM18	0.85	M18	10	2,5	M18	40	72	40	35	16	0.36
NSM20	1.2	M20	10	2,5	M20	40	72	40	35	16	0.36
NSM22	1.2	M22	1	2,5	M22	45	81	45	40	18	0.58
NSM24	1.8	M24	1	3	M24	50	90	50	45	20	0.72
NSM27	2.1	M27	1	3	M27	50	90	50	45	20	0.7
NSM33	3.2	M33	1	3,5	M33	65	108	60	55	24	1.3
NSM30	3.2	M30	1	3,5	M30	65	108	60	55	24	1.32
NSM39	4.6	M39	1	4	M39	75	126	70	65	28	2.02
NSM36	4.6	M36	1	4	M36	75	126	70	65	28	2.08
NSM45	6.3	M45	1	4,5	M45	85	144	80	75	32	3.04
NSM42	6.3	M42	1	4,5	M42	85	144	80	75	32	3.11
NSM52	8.6	M52	1	5	M52	100	166	90	85	38	4.95
NSM48	8.6	M48	1	5	M48	100	166	90	85	38	5.02
NSM56	11.5	M56	1	5,5	M56	110	184	100	95	42	6.69
NSM64	16	M64	1	6	M64	120	206	110	105	48	9.3

Lifting eye nuts DIN 582

WORKING LOAD LIMITS

Thread	WLL (t)	WLL (t)	WLL (t)	WLL (t)	WLL 0-45° (t)	WLL 45-60° (t)	WLL 0-45° (t)	WLL 45-60° (t)
M6	0,08	Not allowed	0,16	Not allowed	0,05	Not allowed	0,08	Not allowed
M8	0,14	Not allowed	0,28	Not allowed	0,1	Not allowed	0,14	Not allowed
M10	0,23	Not allowed	0,46	Not allowed	0,17	Not allowed	0,23	Not allowed
M12	0,34	Not allowed	0,68	Not allowed	0,24	Not allowed	0,34	Not allowed
M14	0,34	Not allowed	0,68	Not allowed	0,24	Not allowed	0,34	Not allowed
M16	0,7	Not allowed	1,4	Not allowed	0,5	Not allowed	0,7	Not allowed
M18	0,85	Not allowed	1,7	Not allowed	0,6	Not allowed	0,85	Not allowed
M20	1,2	Not allowed	2,4	Not allowed	0,83	Not allowed	1,2	Not allowed
M22	1,2	Not allowed	2,4	Not allowed	0,83	Not allowed	1,2	Not allowed
M24	1,8	Not allowed	3,6	Not allowed	1,27	Not allowed	1,8	Not allowed
M27	2,1	Not allowed	4,2	Not allowed	1,49	Not allowed	2,1	Not allowed
M30	3,2	Not allowed	6,4	Not allowed	2,28	Not allowed	3,2	Not allowed
M33	3,2	Not allowed	6,4	Not allowed	2,28	Not allowed	3,2	Not allowed
M36	4,6	Not allowed	9,2	Not allowed	3,28	Not allowed	4,6	Not allowed
M39	4,6	Not allowed	9,2	Not allowed	3,28	Not allowed	4,6	Not allowed

Lifting eye nuts DIN 582

M42	6,3	Not allowed	12,6	Not allowed	4,5	Not allowed	6,3	Not allowed
M45	6,3	Not allowed	12,6	Not allowed	4,5	Not allowed	6,3	Not allowed
M48	8,6	Not allowed	17,2	Not allowed	6,1	Not allowed	8,6	Not allowed
M52	8,6	Not allowed	17,2	Not allowed	6,1	Not allowed	8,6	Not allowed
M56	11,5	Not allowed	23	Not allowed	8,3	Not allowed	11,5	Not allowed
M64	16	Not allowed	32	Not allowed	11	Not allowed	16	Not allowed
M72	20	Not allowed	40	Not allowed	14,28	Not allowed	20	Not allowed
M80								