

Boltable lifting eyes

Product information

Boltable lifting eye for lifting. Delivered without bolts. Bolt grade must be min 8.8
... [Read more](#)



Material: Steel

Marking: According to standard, CE-marked

Temperature range: -40°C - (+)200°C

Finish: Painted, yellow

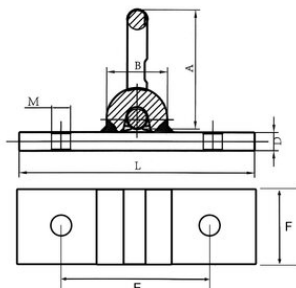
Standard: EN 1677-1

Note: No side loading

Safety factor: 4:1

Boltable lifting eyes

Blueprint



Technical data / Spare Parts

Part code	WLL ton	Base dimensions mm	A mm	B mm	D mm	M mm	L mm	E mm	F mm	Weight kg
NS8PUL1	1	155 x 51	78	40	12	12.5	155	100	51	1.1
NS8PUL2	2	155 x 51	80.5	40	14	14.5	155	100	51	1.2
NS8PUL3	3	155 x 51	94	46.5	16	16.5	155	100	51	1.5
NS8PUL5	5	180 x 60	118	60	20	22.5	180	120	60	2.6
NS8PUL8	8	220 x 62	141	63	26	26.5	220	145	62	4.9