

## Weld-on lifting point, grade 80

---

### Product information

Weld-on lifting point for all lifting directions. Equipped with a spring that holds the eye in desired position.

[... Read more](#)



**Material:** Steel

**Marking:** According to standard, CE-marked

**Temperature range:** -40°C - (+)200°C

**Finish:** Painted, yellow

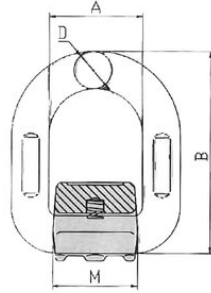
**Standard:** EN 1677-1

**Safety factor:** 4:1

**Grade:** 8

## Weld-on lifting point, grade 80

Blueprint



Technical data / Spare Parts

Part code	WLL ton	A mm	B mm	D mm	M mm	Weight kg
NS8HI1	1.12	41	78.5	13	37	0.4
NS8HI2	2	42	88	14	40	0.47
NS8HI3	3.15	45	94	17	42.5	0.69
NS8HI5	5.3	55	118	22	50	1.46
NS8HI8	8	70	141	26.5	66.5	2.5
NS8HI15	15	97	188	34	90	5.79
NS8HI20	20	149	240	46	125	15.37

### WORKING LOAD LIMITS

Product	0 - 45°		45-60°		0 - 45°		45-60°	
	WLL (t)	WLL (t)	WLL (t)	WLL (t)	WLL (t)	WLL (t)	WLL (t)	WLL (t)
NS8HI1	1,12	1,12	2,24	2,24	1,57	1,12	2,35	1,68
NS8HI2	2	2	4	4	2,8	2	4,2	3
NS8HI3	3,15	3,15	6,3	6,3	4,41	3,15	6,62	4,73
NS8HI5	5,3	5,3	10,6	10,6	7,42	5,3	11,13	7,95
NS8HI8	8	8	16	16	11,2	8	16,8	12
NS8HI15	15	15	30	30	21	15	31,5	22,5