

Stainless steel lifting eye nut DIN 582

Product information

Stainless steel lifting eye for vertical lifting.

[... Read more](#)



Material: AISI 316

Marking: According to standard, CE-marked

Temperature range: -40°C - (+)200°C

Finish: Polished

Standard: DIN 582

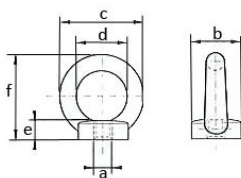
Note: Only for vertical lifting

Warning: Not to be heat-treated

Safety factor: 4:1

Stainless steel lifting eye nut DIN 582

Blueprint



Technical data / Spare Parts

Part code	WLL ton	Thread mm	b mm	c mm	d mm	e mm	f mm	Weight kg
NSMH06L	0.08	M6	20	36	20	8.5	36	0.05
NSMH08L	0.14	M8	20	36	20	8.5	36	0.05
NSMH10L	0.23	M10	25	45	25	10	45	0.09
NSMH12L	0.34	M12	30	54	30	11	53	0.16
NSMH16L	0.7	M16	35	63	35	13	62	0.24
NSMH20L	1.2	M20	39	71	39	14	70	0.36

WORKING LOAD LIMITS

Thread	WLL (t)	WLL (t)	WLL (t)	WLL (t)	WLL (t)	WLL (t)	WLL (t)	WLL (t)
					0 - 45°	45-60°	0 - 45°	45-60°
M6	0,08		0,16		-		-	
M8	0,14		0,28		0,1		0,14	
M10	0,23		0,46					