

Adjustable crane for forklift

Product information

Enables the use of a forklift as a crane. Three different lift angles and rapid attachment to forklift's forks. The location of the hook is adjustable between 740 - 3726 mm. Rotating latch hook as a standard.

... [Read more](#)



Material: Steel

Marking: CE-marked

Finish: Painted, yellow

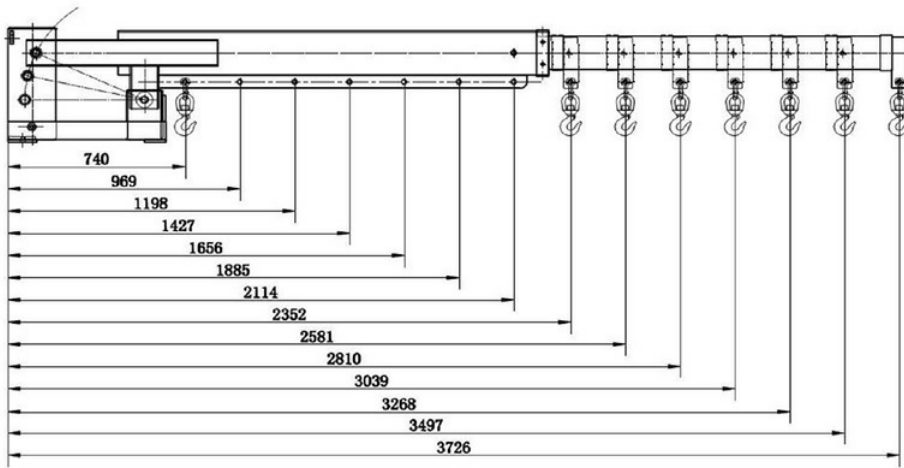
Note: Fork pocket size 65 x 180 mm

Adjustable crane for forklift

Technical data / Spare Parts

Part code	WLL ton	Weight kg
TRUKPU3000	3	216

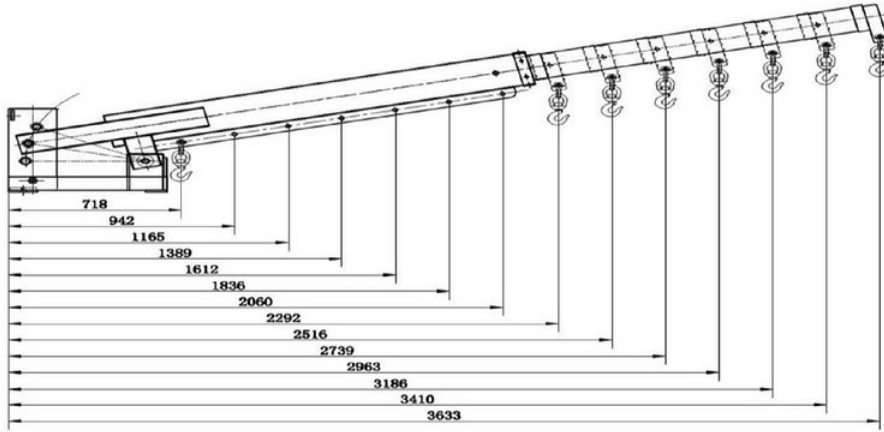
WORKING LOAD LIMITS



Jib angle: horizontal

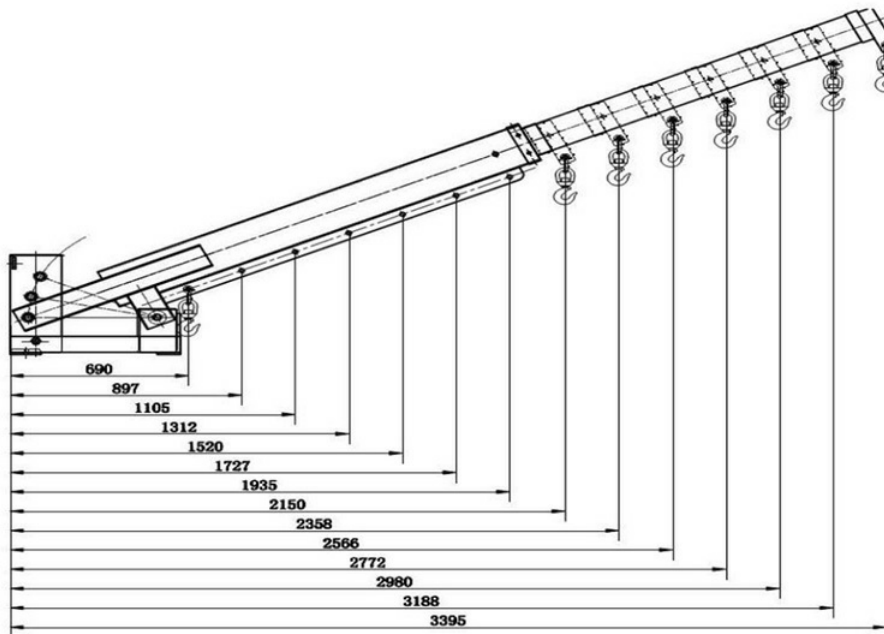
Length (mm)	740	969	1198	1427	1656	1885	2114	2352	2581	2810	3039	3268	3497	3726
WLL (kg)	3000	2291	1853	1556	1341	1178	1050	944	860	790	730	679	635	596

Adjustable crane for forklift



Jib angle: 13°

Length (mm)	942	1165	1389	1612	1836	2060	2292	2516	2739	2963	3186	3410	3633	
WLL (kg)	3000	2357	1906	1598	1377	1209	1078	969	882	811	749,3	697	651	611



Jib angle: 26°

Adjustable crane for forklift

Length (mm)	690	897	1105	1312	1520	1727	1935	2150	2358	2566	2772	2980	3188	3395
WLL (kg)	3000	2475	2009	1692	1460	1285	1147	1032	941	865	800,8	745	696	654

SPARE PARTS

Spare part (product code)	Description	Suitable for crane (product code)
TRUKPU3000TP	Fork pocket T-bolt 1 pc Part no. 12	TRUKPU3000
TRUKPU3000SS	Telescopic tube adjustment rod Incl. R-clip Part no. 5	TRUKPU3000
SALKL10	Swivel latch hook 3,15 t / grade 80 Part no. 11	TRUKPU3000
SAK32SLBP	Shackle 3,25 t / 19 mm Dee type / with locking Part no. 10	TRUKPU3000

Also other spare parts available with a delivery time, ask our sales for more information

