

# Battery operated electric wire hoist for lifting and pulling 24 V

## Product information



Light and easy to operate electrical winch for pulling and lifting. Stepless power control. Equipped with latch hook and overload indicator. 2 x powerfull 24V NiMh batteries and charger.

**Note!** Cable operating length 3,4 m

**Features:** Speed 2,5 m/min | Charging time 2 h

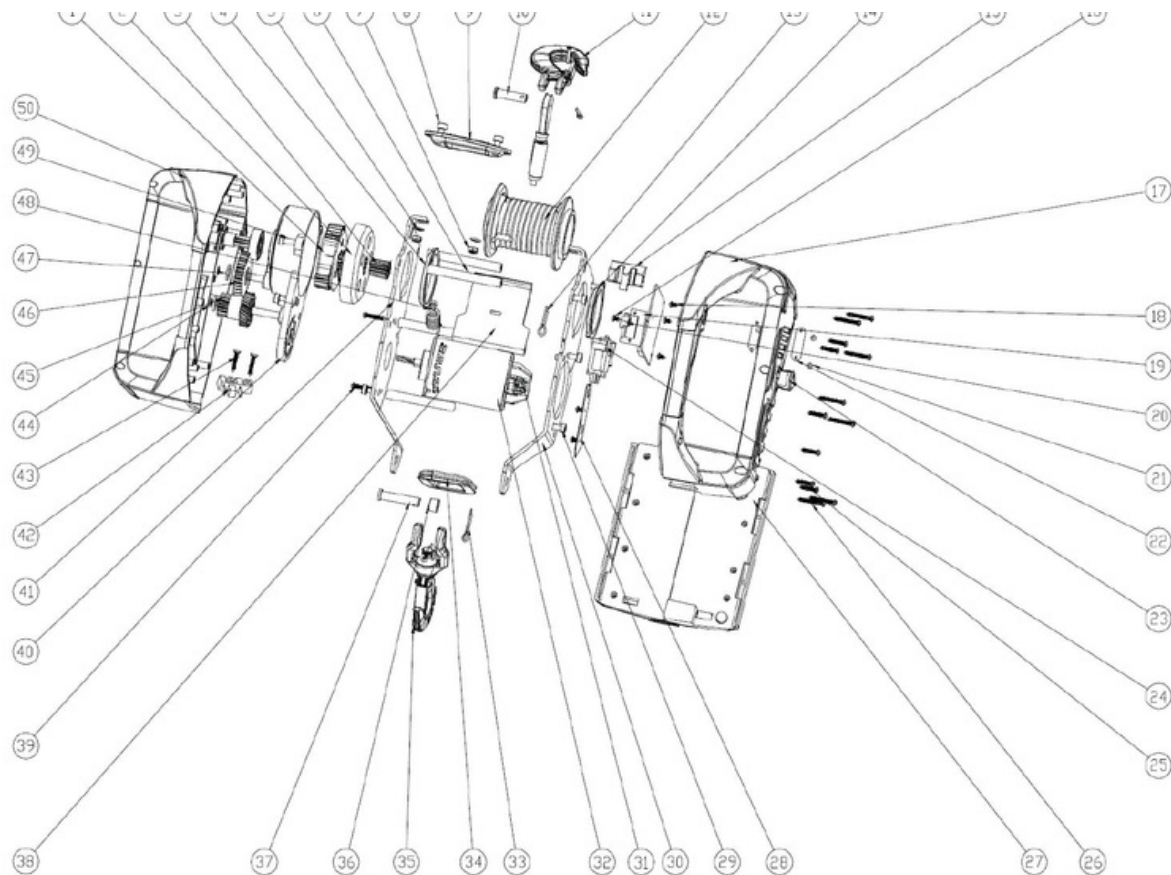
**Marking:** CE-marked

**Note:** Battery operated hoist doesn't include remote control

Part Code	WLL ton	Operation voltage (V)	Cable length m	Hoist motor kW	Type of battery	Weight kg	Delivery time
VANOS450A	0.45	24	4.6	0.75	2500 mAh	9.7	0

## Technical data

## SPARE PARTS



**Spare part (product code)**

**Description**

**Suitable for hoist (product code)**

VANOSVAI4,6

Wire rope 4,6 m |  $\varnothing$  5,8 mm, effective working length 3,4 m | Incl. drum

VANOS450A

VANOSAHILI

Coal

VANOS450A

VANOSLATURI

Charger | Part no. 51

VANOS450A

VANOSAKKU

Battery | Part no. 27

VANOS450A

Also other spare parts available with a delivery time, ask our sales for more information