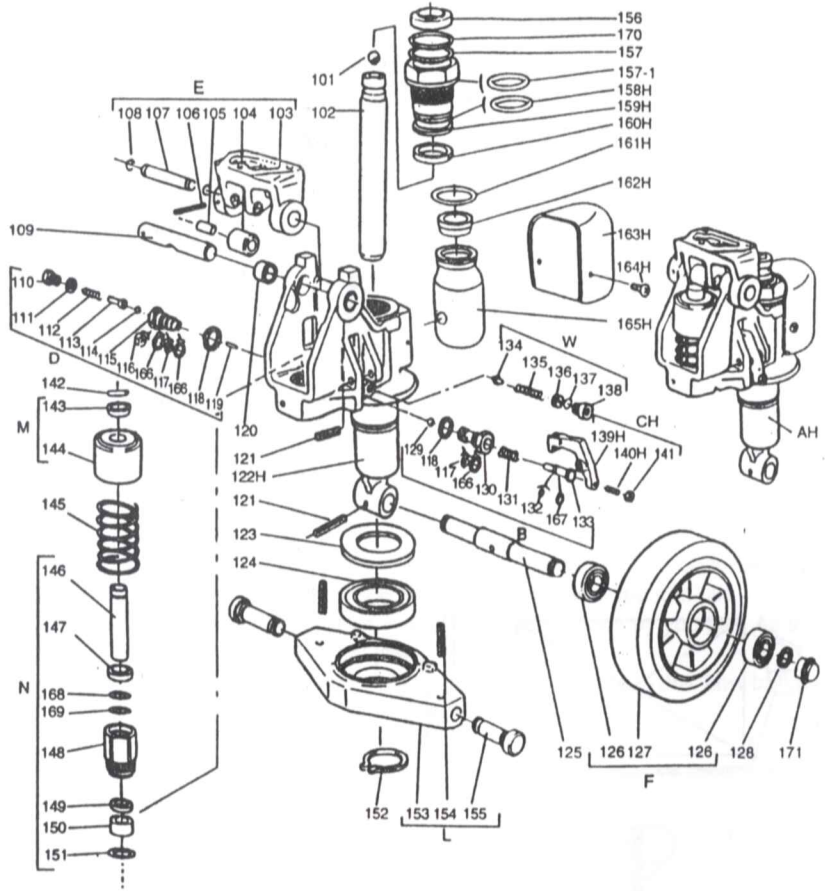
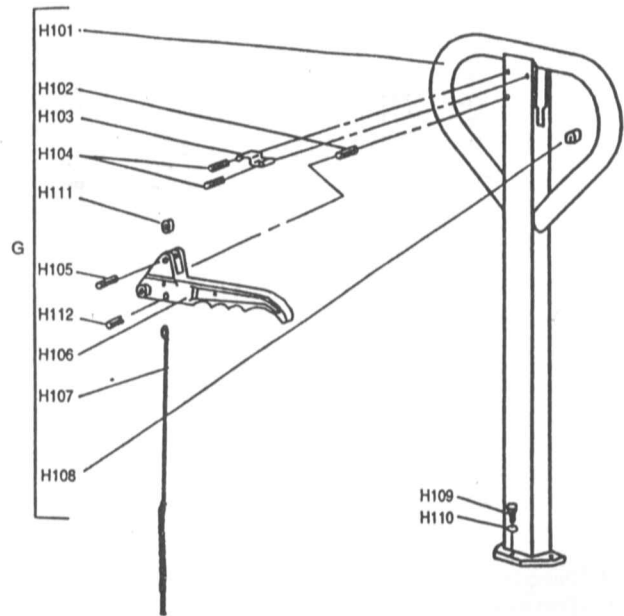


## Parts List of Pump Assembly



PARTS NO.	DESCRIPTION	Q'TY	PARTS NO.	DESCRIPTION	Q'TY
101	Steel ball	1	136	Pressure regulating screw	1
102	Rod	1	137	O-ring	1
103	Base	1	138	Screw	1
104	Steel roller	1	139H	Crank link	1
105	Bushing	1	140H	Setting screw	1
106	Pin	1	141	Nut	1
107	Shaft	1	142	Parallel pin	1
108	Retaining ring	2	143	Retaining cover	1
109	Axle	1	144	Spring cover	1
110	Screw	1	145	Spring	1
111	Washer	1	146	Pump rod	1
112	Spring	1	147	Dust proof ring	1
113	Pressure rod	1	148	Pump cylinder	1
114	Steel ball	1	149	Seal ring	1
115	Pressure valve body	1	150	Nylon bushing	1
116	Split ring	1	151	Red copper washer	1
117	O-ring	2	152	Retaining ring	1
118	Washer	2	153	Rhombus plate	1
119	Steel needle	1	154	Pin	2
120	Bushing	2	155	Dowel pin	2
121	Pin	2	156	Dust proof ring	1
122H	Pump body	1	157	O-ring	1
123	Dust cover	1	157-1	O-ring	1
124	Bearing	1	158H	O-ring	1
125	Steering wheel axle	1	159H	Cylinder	1
126	Bearing	4	160H	Seal ring	1
127A	Steering wheel, Nylon	2	161H	O-ring	1
127B	Steering wheel, Polyurethane	2	162H	Filler plug	1
127C	Steering wheel, Poly/Nylon	2	163H	Reservoir cover	1
127D	Steering wheel, Rubber	2	164H	Screw	2
128	Retaining ring	2	165H	Reservoir	1
129	Steel ball	1	166	Retainer	3
130	Discharge valve body	1	167	Retainer	1
131	Spring	1	168	Retainer	1
132	O-ring	1	169	O-ring	1
133	Discharge valve shaft	1	170	Retainer	1
134	Valve taper core	1	171	Dust cover	2
135	Spring	1			



Parts List of Handle

PARTS NO.	DESCRIPTION	Q' TY	PARTS NO.	DESCRIPTION	Q' TY
H101	Handle	1	H107	Rod and chain	1
H102	Spring pin	1	H108	Rubber cushion	1
H103	Spring leaf	1	H109	Screw	3
H104	Spring pin	2	H110	Spring washer	3
H105	Spring pin	1	H111	Nylon roller	1
H106	Control lever	1	H112	Spring pin	1

