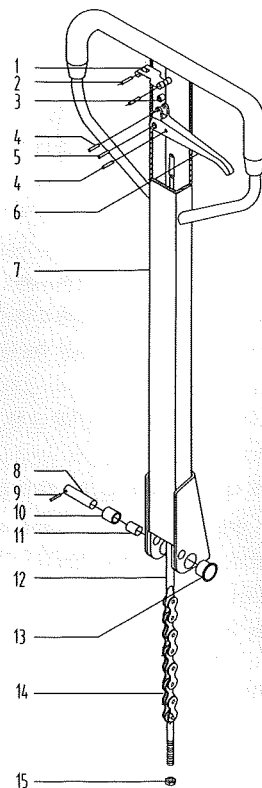
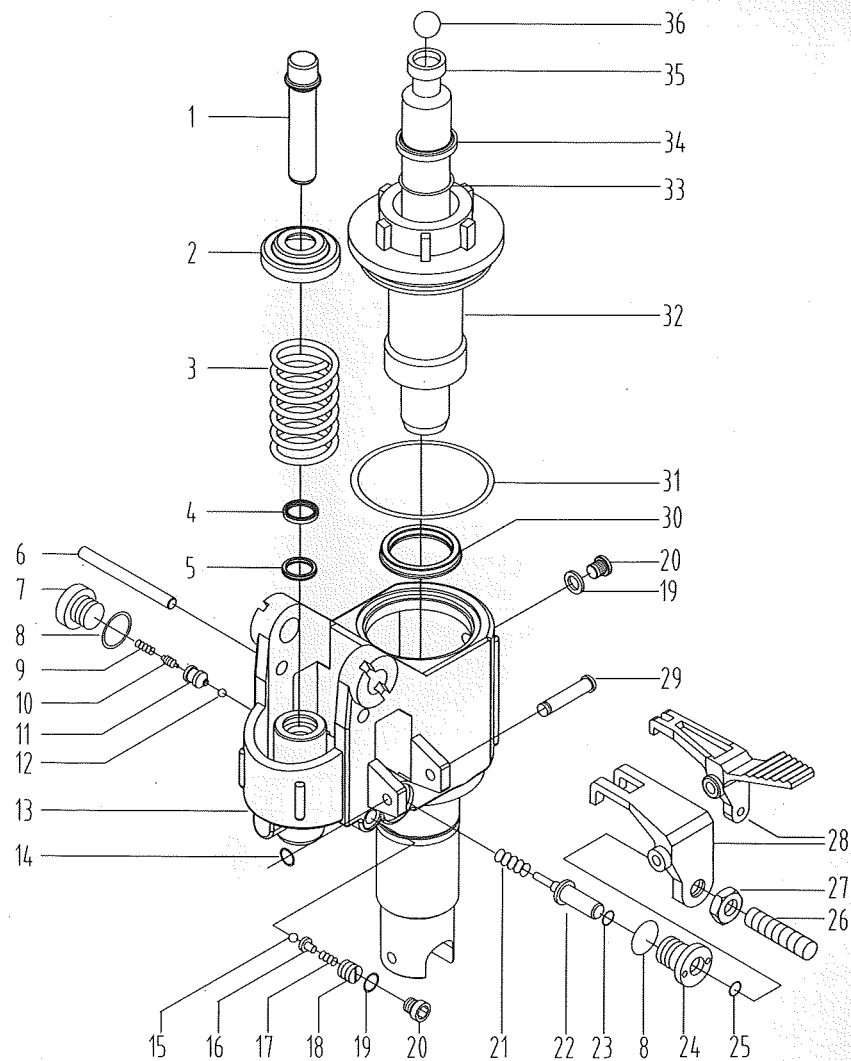


BFD6-7/8 handle assmby and spare parts list



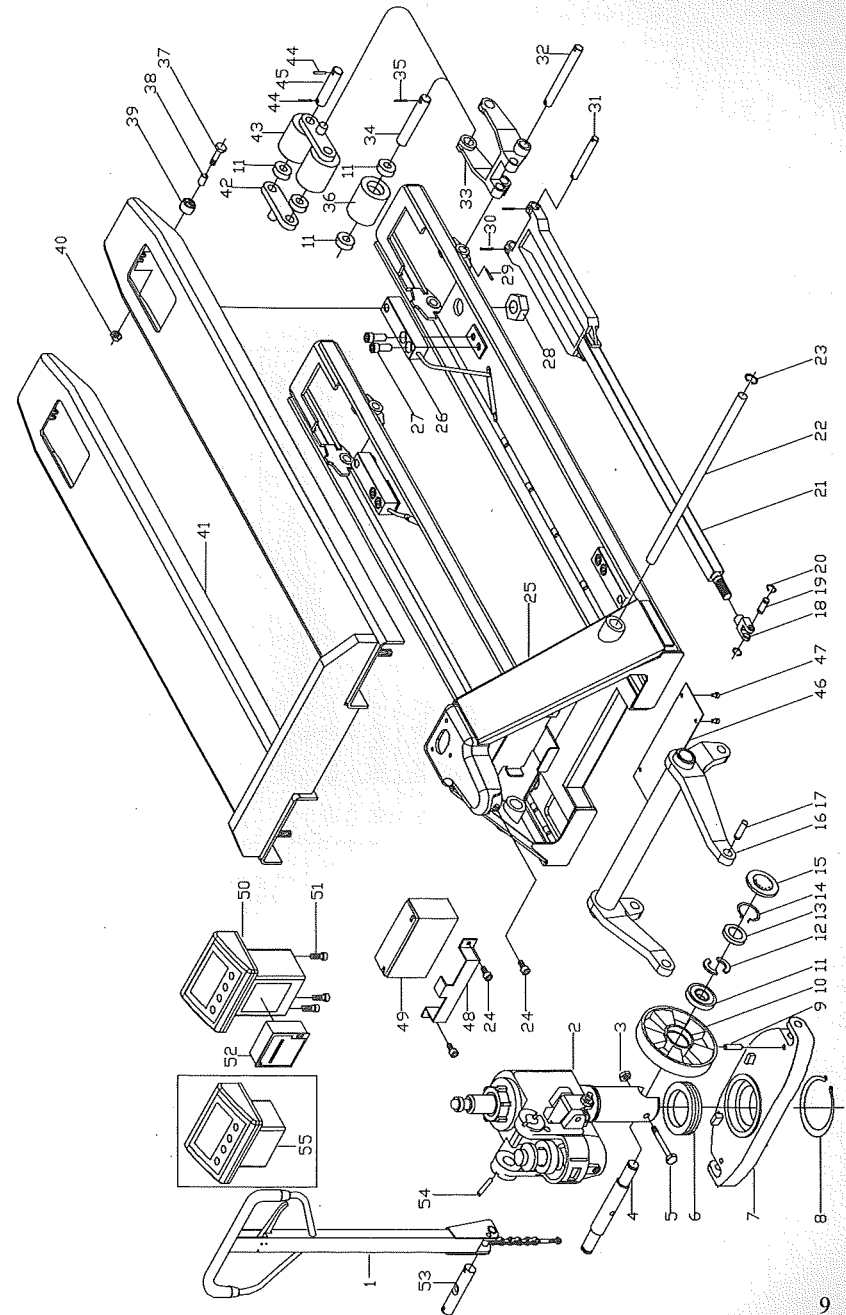
BFD6-7/8 pump assmby and spare parts list



No.	Drawing no.	Description	Qty.	No.	Drawing no.	Description	Qty.
1	DF.1-01a	Location plate	1	9	GB879-86	Pin 3x20	1
2	GB879-86	Pin 4x30	2	10	CN.2-13	Pressure roller	1
3	DF.1-02	Roller	1	11	CSB10	Bushing 1220	1
4	GB879-86	Pin 4x20	2	12	DF.1.2-00	Pull rod	1
5	GB879-86	Pin 6x30	1	13	SF-1	Bushing SF-1F2015	2
6	DF.1-03	Handle knob	1	14		Chain C-6-9-04A	1
7	BF.1.1-00	Handle assembly	1	15	GB889-86	Lock nut M5	1
8	DF I .2-04	Pin	1				

No.	Drawing no.	Description	Qty.	Remark
1	BF.2-1	Pump plunger 18x97	1	
2	AF.2-3	Spring cap	1	
3	BF.2-6a	Spring	1	
4	DH20	Dust ring 18	1	
5	UHS20	Y-ring 18	1	
6	AM-19	Shaft	1	
7	JF.1-17	Seal screw M20x1.5	1	
8	JB982-77	Combined washer 20	2	
9	AF.2-9	Spring	1	
10	SYBC2-07	Valve core	1	
11	SYBC.2-08	Valve	1	
12	GB308-77	Steel ball 6.35	1	
13	BF.2.1-00	Pump house	1	
14	GB894.1-86	Axile snap ring 8	1	
15	GB308-77	Steel ball 5	1	
16	CN.2-26	Steel ball base	1	
17	CN.2-27	Spring 2x8x16	1	
18	CN.2-28	Adjusted screw M10x1	1	
19	JB982-77	Combined washer 10	2	
20	CN.2-17	Screw M10x1	2	
21	BF.2-5	Spring 1.2x9x22	1	
22	AF.2-7	Firing pin	1	
23	GB3452.1-82	O-ring 7X1.8	1	
24	AF.2-06a	Firing pin base	1	
25	GB3452.1-82	O-ring 8x2.65	1	
26	GB73-85	Lock screw M6x25	1	
27	GB6170-86	Hux nut M6	1	
28	AF.2-08	Lever plate	1	Standard
	AF.2-08III	Lever plate 3	1	Pedal
29	BF.2-3	Shaft 8x58	1	
30	UHS31.5	Y-ring 31.5	1	
31	GB3452.1-82	O-ring 65x2.65	1	
32	BF.2-2a	Guide sleeve 31.5	1	
33	GB3452.1-82	O-ring 31.5x3.55	1	
34	DH31.5	Dust ring 31.5	1	
35	AF.2-4	Piston rod 31.5x263	1	
36	GB308-77	Steel ball 19.05	1	

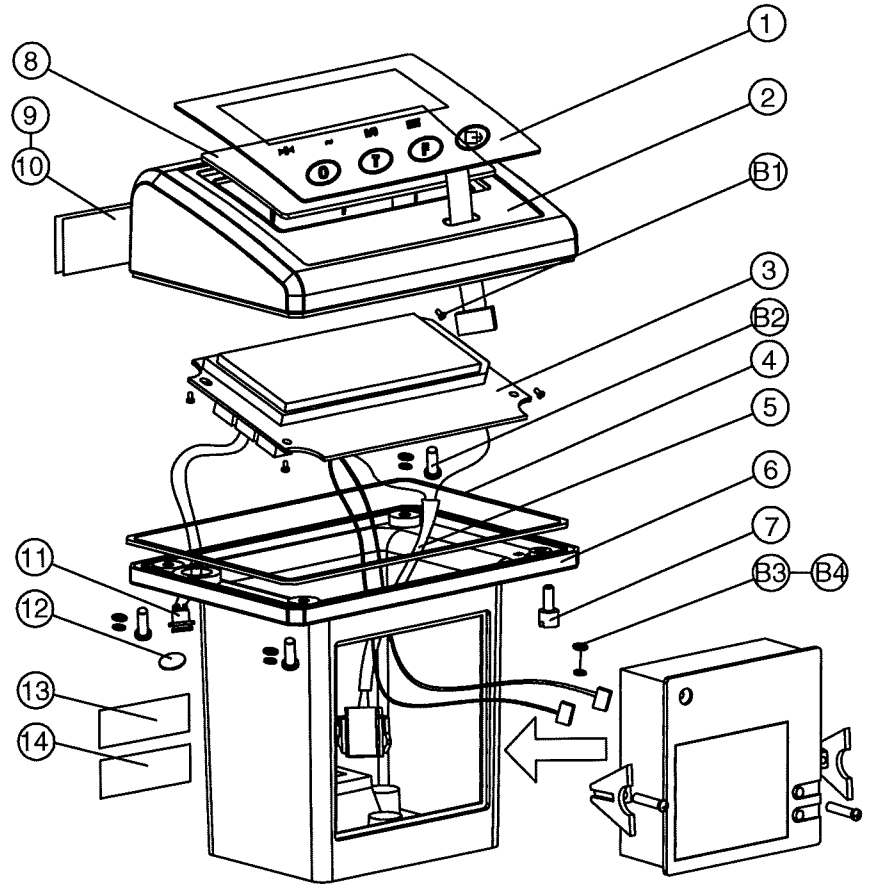
BFC6-7/8 Final assembly drawing and spare parts list



No	Drawing no	Description	Qty	No	Drawing no	Description	Qty	No	Drawing no	Description	Qty
1	BF.1-00	Handle assembly	1	20	GB894.1-86	Circlip for shaft 16	4	39	AF-09	Roller	2
2	BF.2-00	Oil pump assembly	1	21	BFC6.2.1-00	Connecting rod	2	40	GB889-86	Lock nut M6	2
3	GB889-86	Locknut M8	1	22	AF-02	Long shaft	1	41	BFC6.3-00	Scale pan unit	1
4	AF-07	Axle, front wheel	1	23	GB893-86	Circlip for hole 25	2	42	DFQ-03	Support plate	4
5	GB5782-86	Hexagon bolt M8X55	1	24	GB70-85	Inner hexagon bolt M6X12	1	43	DFQ-01A/B	Fork wheel 60X70	4
6	GB306-64	Bearing 8111	1	25	BFC6.1-00	Fork frame	1	44	GB879-86	Spring pin shaft 5X28	8
7	BF-03	Support seat	1	26	BFC6-01	Senso	4	45	DFQ-02	Pin shaft with two hole	4
8	GB894.1-86	Circlip for shaft 55	1	27	GB70-85	Inner hexagon bolt M12X30/40	8	46	BFC6-03	Lid	1
9	GB879-86	Spring pin 5X28	2	28	GB889-86	Lock nut M10	4	47	GB67-85	Pan head screw M6X8	4
10	DFQ.4-01	Wheel 160X50	2	29	GB879-86	Spring pin 5X30	4	48	BFGD7.2.1-03	Clip for battery	1
11	GB278-64	Bearing 60204	8/12	30	GB879-86	Spring pin 5X22	4	49	3-FM-10	Battery	1
12	AF-05	Semi-circular ring	4	31	BFC6.2-02	Pin shaft with two hole 16X111	2	50		Meter (print)	1
13	AF-06	Bowl washer	2	32	DB.3.3-04	Pin shaft with two hole 16X148	2	51	GB70-85	Inner hexagon bolt M6X16	3
14	GB894.1-86	Circlip for shaft 20	2	33	BFC6.2-01b	Wheel frame	2	52		Printer	1
15	DF-10	Dustproof cover	2	34	DFQ-05	Pin shaft with hole	2	53	BF-01	Pressure wheel axle 20X106	1
16	BF.3-00	Rocker arm unit	1	35	GB879-86	Spring pin shaft 5X28	2	54	GB879-86	Spring pin 5X40	2
17	BF-04	Pin roll 16X40	2	36	DFQ-04A/B	Fork wheel 70X80	2	55		Meter	
18	AF.7-05	Coupling joint	2	37	GB5782-86	Hexagon bolt M6X50	2				
19	EF-01	Double-groove pin roll 16X52	2	38	AF-08	Sleeve	2				

SN	BOM	Description
1	72223115	IND212 Overlay
2	72225901	IND212 front cover
3	72223103	PCB
4	72225360	Wiring Harness
5	72218570	Gasket
6	72225903	IND212 Box
7	128971	M4x18-Zn.D
8	72228198	IND212 Gasket
9	72222805	Functional Label
10	127591	Label
11	72228862	Wiring Harness
12	72230294	Seal Cover
13	143657	Electrostatic Warning Label
14	170332	Power Warning Label
B1	113259	GB845 ST3.5x9.5-Zn.D
B2	136403	SCREW M4x12-Zn.D
B3	102644	M4-Zn.D
B4	179815	3.55x1.8

IND212-101Y



序号	BOM	Description
1	72223115	IND212 Overlay
2	72225901	IND212 front cover
3	72223103	PCB
4	72218570	Gasket
5	72225360	Wiring Harness
6	72225902	IND212 Box
7	128971	M4x18-Zn.D
8	72228198	IND212
9	72222805	Functional Label
10	127591	Label
11	72228862	Wiring Harness
12	72230294	Seal Cover
13	143657	Electrostatic Warning Label
14	170332	Power Warning Label
B1	113259	GB845 ST3.5x9.5-Zn.D
B2	136403	SCREW M4x12-Zn.D
B3	102644	M4-Zn.D
B4	179815	3.55x1.8