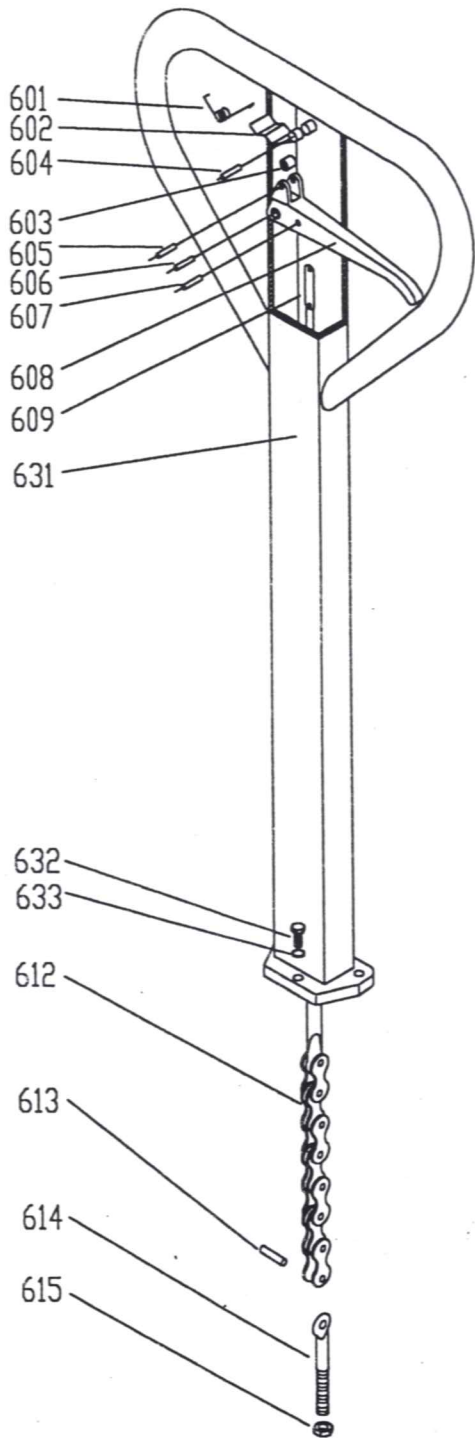


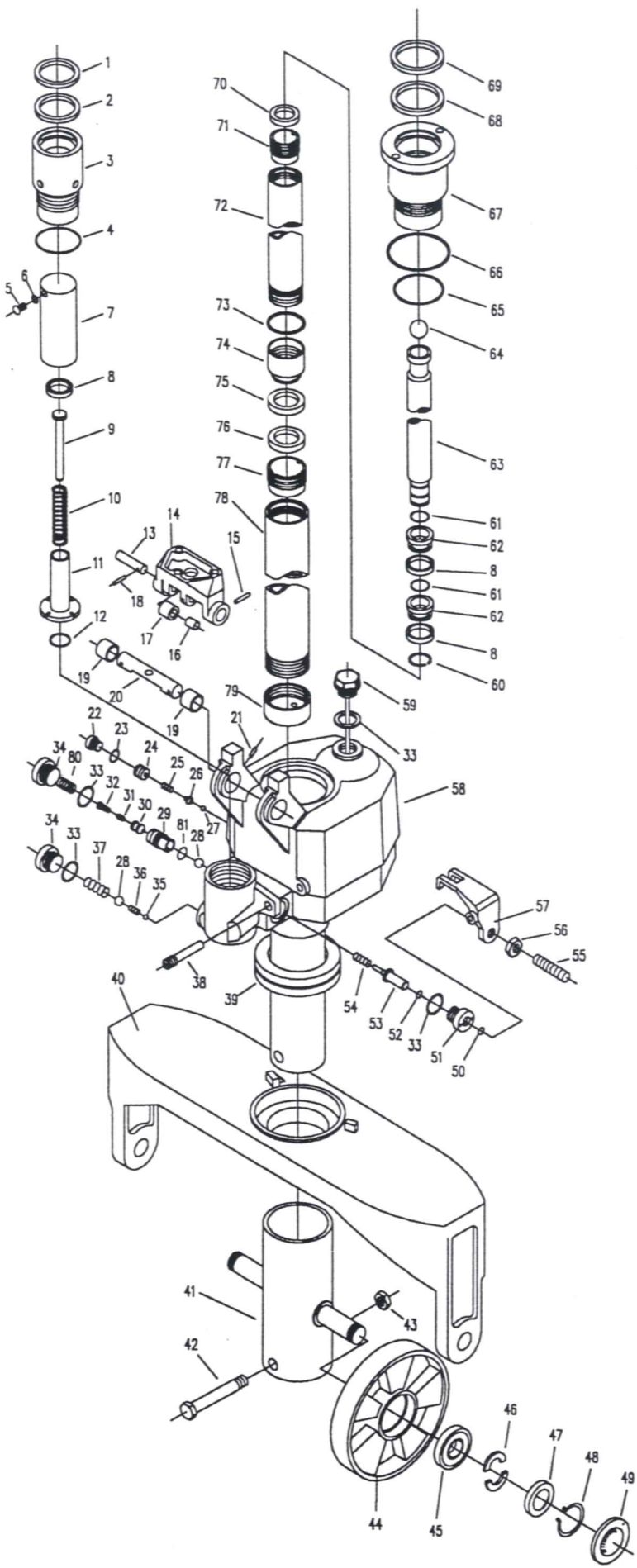
NO.	DESCRIPTION	QUANTITY
1	SCREW	1
2	BOLT	2
3	WASHER	4
4	NUT	4
5	BUSH	2
6	FOOT	2
7	KEEP-OFF RING	10
8	PIN	2
9	PROP ARM	1
10	BUSH	2
11	WASHER	6
12	PROP ARM	2
13	BEARING	4
14	WHEEL	2
15	SHAFT	2
16	ROLLER	4
17	BUSH	4
18	FRAME	1

JF-CJ



DRAWING NO	DESCRIPTION	QUANTITY
601	Spring	1
602	Blade spring	1
603	Roller	1
604	Elastic pin	1
605	Elastic pin	1
606	Elastic pin	1
607	Elastic pin	1
608	Handle	1
609	Pull rod	1
631	Handle tube	1
632	Serew	3
633	Single coil spring lock washer	3
612	Chain	1
613	Pin	1
614	Adjusting screw	1
615	Nut	1

CN-SB



NO.	DESCRIPTION	QUANTITY
1	DUST RING	1
2	Y-RING	1
3	PUMP CYLINDER	1
4	O-RING	1
5	SCREW	1
6	WASHER	1
7	PUMP PLUNGER	1
8	Y-RING	3
9	MANDRIL	1
10	SPRING	1
11	PUMP PLUNGER	1
12	O-RING	1
13	SHAFT	1
14	PRESSURE FRAME	1
15	PIN	2
16	BUSH	1
17	ROLLER	1
18	PIN	1
19	BUSH	2
20	SHAFT	1
21	PIN	2
22	SCREW	1
23	WASHER	1
24	SCREW	1
25	SPRING	1
26	SPRING SEAT	1
27	STEEL BALL	1
28	STEEL BALL	2
29	SEAT OF VALVE	1
30	SEAT OF VALVE	1
31	SPINDLE OF VALVE	1
32	SPRING	1
33	WASHER	4
34	SCREW	3
35	STEEL BALL	1
36	SPRING	1
37	SPRING	1
38	PIN	1
39	BEARING	1
40	SUPPORTING BASE	1
41	BASE OF TURNING WHEEL	1
42	BOLT	1
43	NUT	1
44	WHEEL	2
45	BEARING	4
46	HALF	4
47	WASHER	2
48	KEEP-OFF RING	2
49	DUST COVER	2
50	O-RING	1
51	VALVE SLEEVE	1
52	O-RING	1
53	STRIKE PIN	1
54	SPRING	1
55	SCREW	1
56	NUT	1
57	LEVER PLATE	1
58	BASE	1
59	OIL MARK	1
60	KEEP OFF RING	1
61	O-RING	2
62	BUSH	2
63	PISTON ROD	1
64	STEEL BALL	1
65	O-RING	1
66	O-RING	1
67	CYLINDER LINER	1
68	Y-RING	1
69	DUST RING	1
70	DUST RING	1
71	BUSH	1
72	CYLINDER	1
73	O-RING	1
74	BUSH	1
75	Y-RING	1
76	DUST RING	1
77	BUSH	1
78	CYLINDER	1
79	BUSH	1
80	SPRING	1
81	O-RING	1