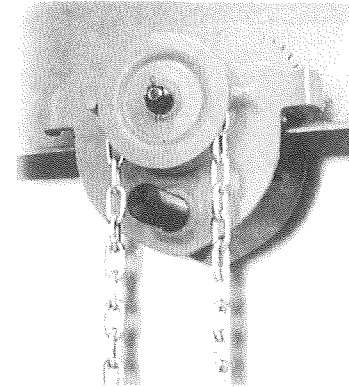


TROLLEY

OPERATING INSTRUCTION



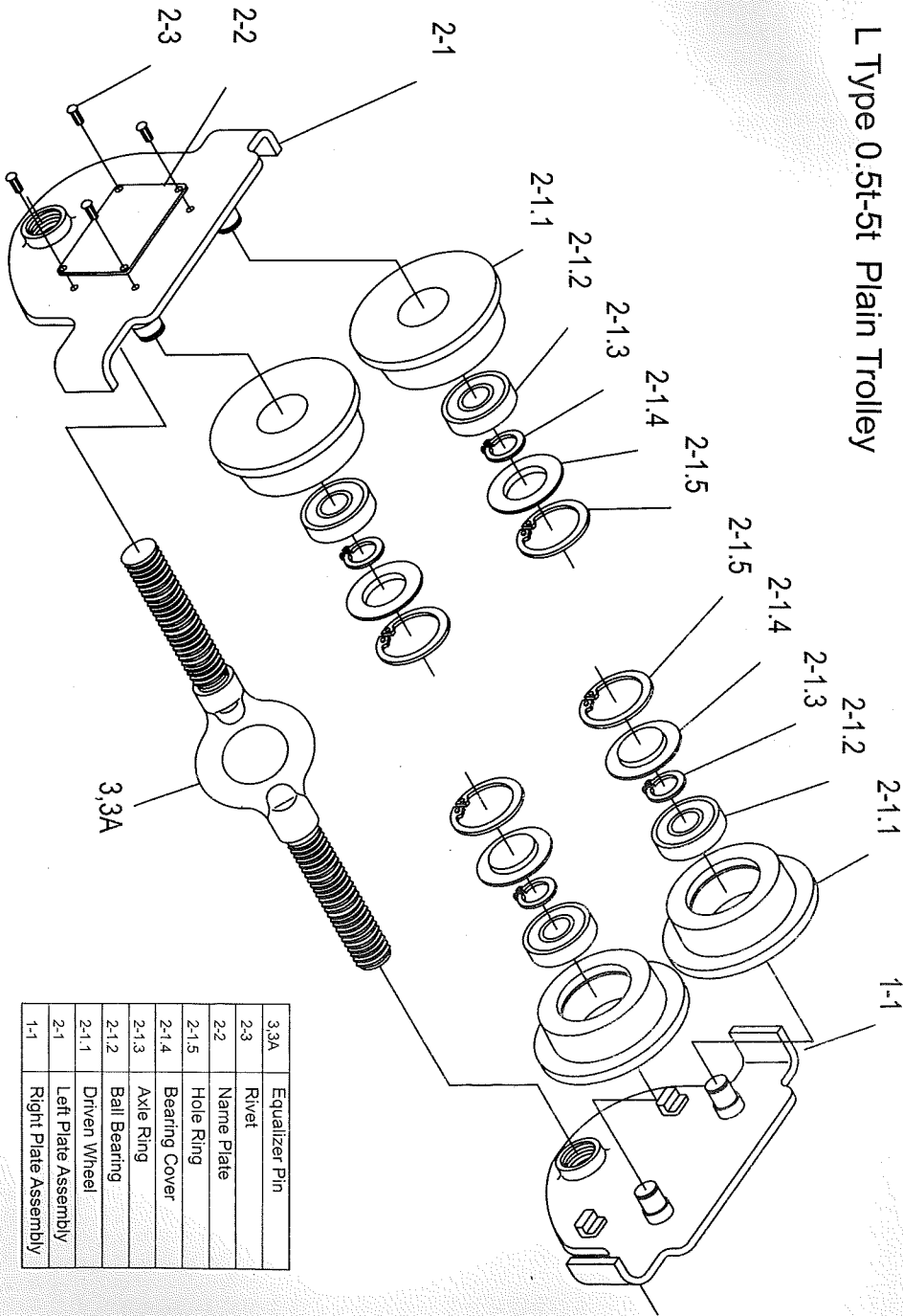
FEATURES

This series trolleys are divided into two kinds: plain trolley & geared trolley, the geared trolley is had operated by pulling the hand-chain & the plain trolley by pushing the load lifted, running on the bottom flange of monorail and swivel hanger pin to the range lit. the trolley to be attached with hand block becomes a conveyer.

ASSEMBLE AS FOLLOWS

- Measure the actual width of the runway beam;
- Assemble the required number of spacer washers equally to the inside of the trolley side plates so that swivel hanger pin trolley wheel flanges is 6mm greater than the runway beam width. Assemble the remaining washers outside the trolley side plate & fit nats to hanger pin.
- Suspend the maximum safe working load form the trolley the run the unit slowly along the full length of the runway to ensure sahib factory operation.

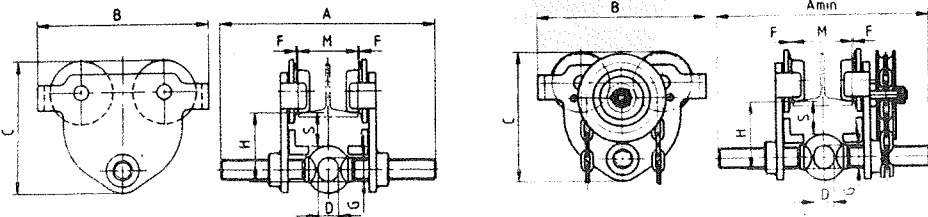
L Type 0.5t-5t Plain Trolley



3,3A	Equalizer Pin
2-3	Rivet
2-2	Name Plate
2-1.5	Hole Ring
2-1.4	Bearing Cover
2-1.3	Axle Ring
2-1.2	Ball Bearing
2-1.1	Driven Wheel
2-1	Left Plate Assembly
1-1	Right Plate Assembly

L TYPE PLAIN TROLLEY SPECIFICATIONS

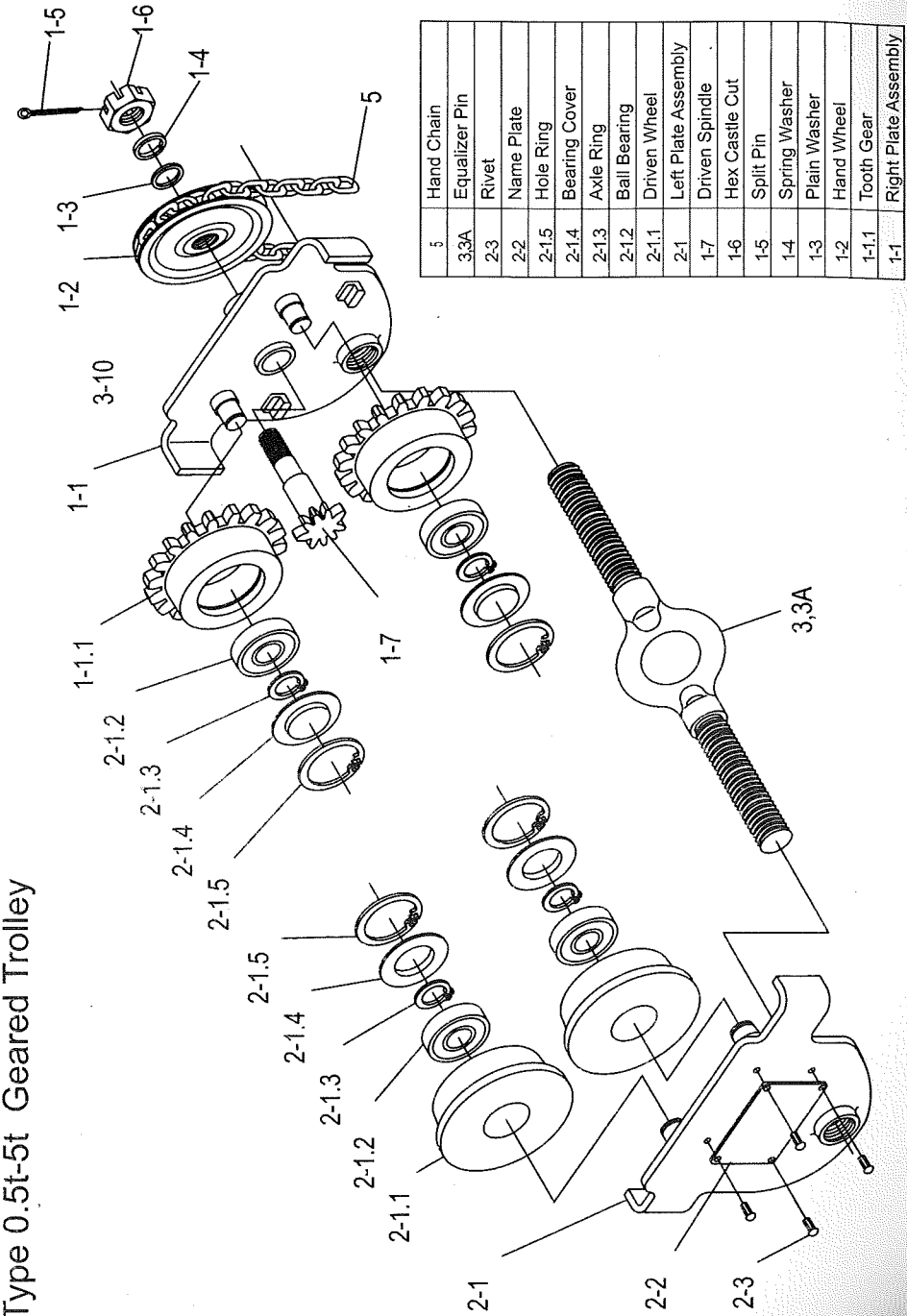
Rated capacity	t	0.5	1	1.5	2	3	5	
Test load	kN	7.35	14.71	22.06	29.42	44.13	61.29	
Min radius of curve	m	0.85	1.0	1.1	1.1	1.3	1.4	
Dimensions (mm)	A	a	284	302	302	314	328	346
		b		388	388	400	415	432
	B	206	252	265	276	335	377	
	C	156	190	205	222	262	292	
	H	74	90	106	106	121	136	
	S	32	38	38	38	40	42	
	D	25	30	40	40	46	52	
	G	30	36	48	48	58	65	
	F	1.5-3						
I-beam width range (mm)	M	a	50-220	58-220	66-220	66-220	74-220	90-220
		b		165-305	165-305	165-305	178-305	178-305
Net weight (kg)		a	5	9	11.5	14.5	23.5	36
		b		10	12.5	15.5	25	38.5



L TYPE GEARED TROLLEY SPECIFICATIONS

Rated capacity	t	0.5	1	1.5	2	3	5	
Test load	kN	7.35	14.71	22.06	29.42	44.13	61.29	
Running height	m	2.5						
Chain pull to lift full load	m	25	50	70	90	95	140	
Min radius of curve	m	0.85	1.0	1.1	1.1	1.3	1.4	
Dimensions (mm)	A _{min}	a	284	302	302	314	328	346
		b		388	388	400	415	432
	B	206	252	265	276	335	377	
	C	156	190	205	222	262	292	
	H	74	90	106	106	121	136	
	S	32	38	38	38	40	42	
	D	25	30	40	40	46	52	
	G	30	36	48	48	58	65	
	F	1.5-3						
I-beam width range (mm)	M	a	50-220	58-220	66-220	66-220	74-220	90-220
		b		165-305	165-305	165-305	178-305	178-305
Net weight (kg)		a	9	13	15.5	18.5	27.5	40
		b		14	16.5	19.5	29	42.5

L Type 0.5t-5t Geared Trolley



5	Hand Chain
3.3A	Equalizer Pin
2-3	Rivet
2-2	Name Plate
2-1.5	Hole Ring
2-1.4	Bearing Cover
2-1.3	Axle Ring
2-1.2	Ball Bearing
2-1.1	Driven Wheel
2-1	Left Plate Assembly
1-7	Driven Spindle
1-6	Hex Castle Nut
1-5	Split Pin
1-4	Spring Washer
1-3	Plain Washer
1-2	Hand Wheel
1-1.1	Tooth Gear
1-1	Right Plate Assembly